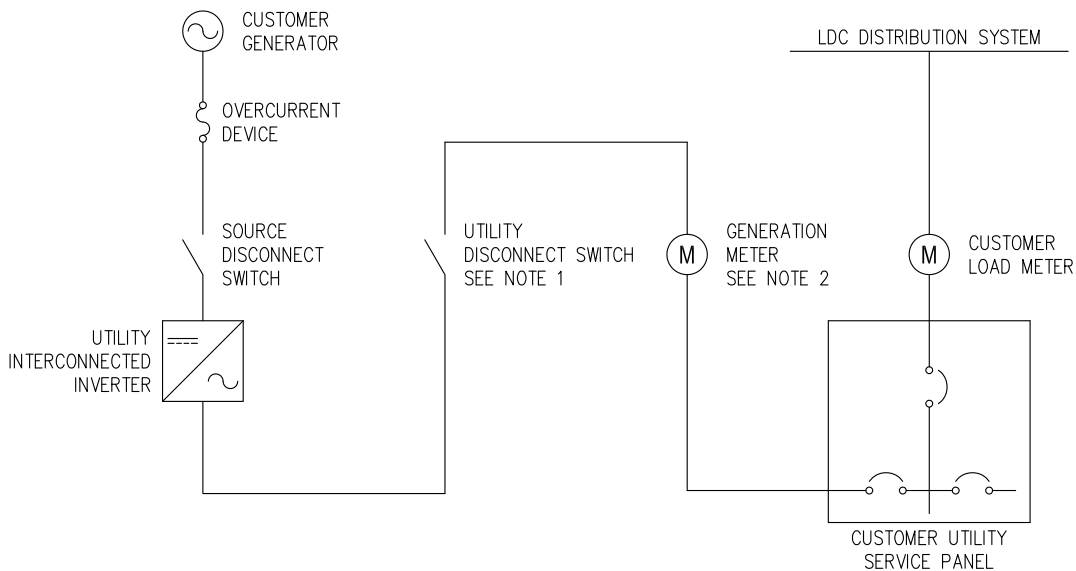


TYPICAL LAYOUT DIAGRAM



TYPICAL SCHEMATIC DIAGRAM

NOTES:

- 1) THE CUSTOMER SHALL SUPPLY AND INSTALL A UTILITY DISCONNECT SWITCH ADJACENT TO BOTH THE GENERATION METER AND THE CUSTOMER LOAD METER AND IN A LOCATION APPROVED BY PUC. THE DISCONNECT SWITCH SHALL BE LOCKABLE IN THE OPEN POSITION. THERE IS NO REQUIREMENT FOR DISCONNECT SWITCH CONTACT OPERATION TO BE VERIFIABLE BY DIRECTLY VISIBLE MEANS.
- 2) THE CUSTOMER SHALL SUPPLY AND INSTALL ALL METER BASES IN ACCORDANCE WITH PUC CONDITIONS OF SERVICE.

CERTIFICATE OF APPROVAL			
The installation work covered by this document meets the safety requirements of Section 4 of Regulation 22/04			
<i>Rob Harten</i>	<i>2010/03/30</i>		
Name	Date		
<i>[Signature]</i>		<i>P. ENG</i>	
Signature & Professional Designation			

SCALE:
NTS



STANDARD INSTALLATION DRAWING
microFIT GENERATION PROJECT
RESIDENTIAL AND SMALL COMMERCIAL
SERVICES (200 A OR LESS)
SERIES METER CONNECTION

DRAWN BY: J. Tevc	DATE: FEB 22/10
CHECKED BY: M. Orr	DATE: FEB 24/10
APPROVED BY: R. Harten	DATE: MAR 25/10
Drawing Number: PUC-10-501-A	Rev. 1

No.	Revision	Date	Initial
1	MODIFIED DISCONNECT REQUIREMENTS	2010-03-30	J.T.
0	ISSUED FOR CUSTOMER USE	2010-03-23	J.T.