



**Sault Ste. Marie
Drinking Water System
Waterworks # 260006685**

**Annual & Summary Reports
2009**

ANNUAL REPORT 2009

Drinking-Water System Number:	260006685
Drinking-Water System Name:	Sault Ste. Marie Water System
Drinking-Water System Owner:	City of Sault Ste. Marie
Drinking-Water System Category:	Large Municipal Residential
Period being reported:	Year 2009

Complete if your Category is Large Municipal Residential or Small Municipal Residential

Does your Drinking-Water System serve more than 10,000 people? Yes No

Is your annual report available to the public at no charge on a web site on the Internet?
Yes No

Location where Summary Report required under O. Reg. 170/03 Schedule 22 will be available for inspection.

PUC Services Inc.
765 Queen St East, PO Box 9000
Sault Ste. Marie, ON
P6A 6P2

Note: For the following tables below, additional rows or columns may be added or an appendix may be attached to the report

List all Drinking-Water Systems (if any), which receive all of their drinking water from your system:

Drinking Water System Name	Drinking Water System Number
N/A	

Did you provide a copy of your annual report to all Drinking-Water System owners that are connected to you and to whom you provide all of its drinking water?

Yes No N/A

Indicate how you notified system users that your annual report is available, and is free of charge.

- Public access/notice via the web
- Public access/notice via Government Office
- Public access/notice via a newspaper
- Public access/notice via Public Request
- Public access/notice via a Public Library
- Public access/notice via other method : **Billing statements**

Describe your Drinking-Water System

PUC Services Inc. operates, maintains and manages the Sault Ste. Marie water supply on behalf of the City's Public Utilities Commission. The PUC Services Inc. business office is located at 765 Queen Street East. Regular business hours are 08:30 to 16:30, Monday to Friday. The telephone number is (705) 759-6500. The PUC Water Treatment Operations Control Centre is located at the A.S. Boniferno Water Filtration Plant, 2059 Second Line West. The licensed operators at this facility monitor and control all aspects of water production and quality, through the use of a modern computer based control system. Water for Sault Ste. Marie is obtained from two principle sources: surface water from Lake Superior and ground water from six deep wells. Raw water from the intake at Gros Cap is pumped to the water treatment plant where a process of filtration and chlorination prepares the water for consumption. Water from the deep wells is chlorinated prior to being pumped to the distribution system. On a typical day our customers consume about 35,000 cubic metres of water. Three water storage reservoirs located in the distribution system hold up to 52000 cubic metres of water [or 1-1/2 days-average consumption].

List all water treatment chemicals used over this reporting period

SSM WTP – Uses Aluminum Sulfate, Chlorine gas and Aqueous Ammonia
Goulais P/S – Uses Chlorine gas and Aqueous Ammonia
Steelton P/S – Uses Chlorine gas and Aqueous Ammonia
Shannon P/S – Uses Chlorine gas and Aqueous Ammonia
Lorna P/S – Uses Chlorine gas and Aqueous Ammonia

Were any significant expenses incurred to?

- Install required equipment
- Repair required equipment
- Replace required equipment

Please provide a brief description and a breakdown of monetary expenses incurred.

WTP – Replaced domestic septic leaching bed, upgrades to culvert & catch basin on Wtp property, installed new travel restraint system for operator protection, rebuild floc mixer in plant coagulation process, installed new sewage pumps in septic fields, replaced lighting on property grounds, replacement of the transformer for incoming power feed, float switches replaced in , replaced backwash actuator valve, installed new shaft guarding on all exposed spinning motors, undertook crane inspections for all lifting devices.

Goulais Pump Station – Well upgrades which included new chlorinators and ammonia feed systems, installed new pressure transmitter, replaced rtu radio for communication, Bristol control wave remote ethernet input module for internal pump station communication, installed signal conditioner unit for improvement in communication.

Steelton Pump Station – Well upgrades which included new chlorinators and ammonia feed systems, installed new pressure transmitter, Bristol control wave remote ethernet input module for internal pump station communication, installed signal conditioner unit for improvement in communication.
Shannon Pump Station – Well upgrades, Bristol control wave remote ethernet input module, signal conditioner unit

Lorna Pump Station – Well upgrades which included new chlorinators and ammonia feed systems, installed new pressure transmitter, Bristol control wave remote ethernet input module for internal pump station communication, installed signal conditioner unit for improvement in communication.
Shannon Pump Station – Well upgrades, Bristol control wave remote ethernet input module, signal conditioner unit

Penno Rd pumping station – Propane system rebuilds for backup pumping capability.

Zone 2 Booster Station – Valve rebuilding for aged equipment and to improve system performance

Provide details on the notices submitted in accordance with subsection 18(1) of the Safe Drinking-Water Act or section 16-4 of Schedule 16 of O.Reg.170/03 and reported to Spills Action Centre

Incident Date	Parameter	Result	Unit of Measure	Corrective Action	Corrective Action Date
Apr 8-09	Lead adverse on distribution sample	77	ug/L	Hydrant re-sampled – result came back below adverse, value (4.7 ug/L)	Apr 8-09
Jul 2-09	Lorna P/S – unchlorinated water (5 min approx 22m ³)	<0.25	mg/L	Pump shut down remotely on low chlorine alarm, operator on-site back flushed immediately water to drain until residual reached 1.07 mg/L	July 2-09
Nov 25-09	Shannon P/S – low chlorine residual	<0.25	mg/L	Operator back flushed until residual read 1.00 mg/L (approx 1 hr)	Nov 25-26-09

Microbiological testing done under the Schedule 10, 11 or 12 of Regulation 170/03, during this reporting period.

SSM WTP					
	Number of Samples	Range of E.Coli Or Fecal Results (min #)-(max #)	Range of Total Coliform Results (min #)-(max #)	Number of HPC Samples	Range of HPC Results (min #)-(max #)
Raw	52	0-present	0-23 (present)	N/A	N/A
Treated	52	Absent	absent	52	0-2
Distribution	1137	Absent	absent	298	0-1500

Goulais 1 P/S					
	Number of Samples	Range of E.Coli Or Fecal Results (min #)-(max #)	Range of Total Coliform Results (min #)-(max #)	Number of HPC Samples	Range of HPC Results (min #)-(max #)
Raw	27	Absent	absent	N/A	
Treated	27	Absent	absent	27	0-6

Goulais 2 P/S					
	Number of Samples	Range of E.Coli Or Fecal Results (min #)-(max #)	Range of Total Coliform Results (min #)-(max #)	Number of HPC Samples	Range of HPC Results (min #)-(max #)
Raw	14	Absent	absent	N/A	
Treated	14	Absent	absent	14	0-2

Steelton P/S					
	Number of Samples	Range of E.Coli Or Fecal Results (min #)-(max #)	Range of Total Coliform Results (min #)-(max #)	Number of HPC Samples	Range of HPC Results (min #)-(max #)
Raw	51	Absent	absent	N/A	
Treated	51	Absent	absent	51	0-5

Shannon P/S					
	Number of Samples	Range of E.Coli Or Fecal Results (min #)-(max #)	Range of Total Coliform Results (min #)-(max #)	Number of HPC Samples	Range of HPC Results (min #)-(max #)
Raw	20	Absent	absent	N/A	
Treated	20	Absent	absent	20	0-1

Lorna 2 P/S					
	Number of Samples	Range of E.Coli Or Fecal Results (min #)-(max #)	Range of Total Coliform Results (min #)-(max #)	Number of HPC Samples	Range of HPC Results (min #)-(max #)
Raw	34	Absent	absent	N/A	
Treated	34	Absent	absent	34	0-2

Operational testing done under Schedule 7, 8 or 9 of Regulation 170/03 during the period covered by this Annual Report.

SSM WTP		
	Number of Grab Samples	Range of Results (min #)-(max #)
Filter #1 (NTU)	8760	0.03 - 1.0
Filter #2 (NTU)	8760	0.03 - 1.0
Filter #3 (NTU)	8760	0.02 - 1.0
Filter #4 (NTU)	8760	0.04 - 1.0
Chlorine (mg/L)	8760	0.51 - 2.0

NOTE: Continuous monitors use 8760 as the number of samples.

Goulais P/S		
	Number of Grab Samples	Range of Results (min #)-(max #)
Chlorine (mg/L)	8760	0.21-1.88

NOTE: Continuous monitors use 8760 as the number of samples.

Steelton P/S		
	Number of Grab Samples	Range of Results (min #)-(max #)
Chlorine (mg/L)	8760	0.04 - 2.0

NOTE: Continuous monitors use 8760 as the number of samples.

Shannon P/S		
	Number of Grab Samples	Range of Results (min #)-(max #)
Chlorine (mg/L)	8760	0.26 - 1.72
<i>NOTE: Continuous monitors use 8760 as the number of samples.</i>		

Lorna P/S		
	Number of Grab Samples	Range of Results (min #)-(max #)
Chlorine (mg/L)	8760	0.36 - 1.86
<i>NOTE: Continuous monitors use 8760 as the number of samples.</i>		

Distribution System		
	Number of Grab Samples	Range of Results (min #)-(max #)
Chlorine (mg/L)	1141	0.42 - 1.59
<i>NOTE: Continuous monitors use 8760 as the number of samples.</i>		

Summary of additional testing and sampling carried out in accordance with the requirement of an approval, order or other legal instrument.

WTP Additional Raw Water Sampling				
Parameter	Units	MAC	Results	Date Sampled
Bromide	mg/L		<0.02	Jan 12-09
Total Organic Carbon	mg/L		2	Jan 12-09
Bromide	mg/L		<0.20	Apr 7-09
Total Organic Carbon	mg/L		1.9	Apr 7-09
Bromide	mg/L		<0.1	Jul 20-09
Total Organic Carbon	mg/L		1.9	Jul 20-09
Bromide	mg/L		<0.10	Nov 11-09
Total Organic Carbon	mg/L		1.4	Nov 11-09

Goulais 1 P/S Additional Raw Water Sampling				
Parameter	Units	MAC	Results	Date Sampled
Bromide	mg/L		P/S Not on	P/S Not on
Total Organic Carbon	mg/L		P/S Not on	P/S Not on
Bromide	mg/L		<0.20	Jun 12-09
Total Organic Carbon	mg/L		1.7	Jun 12-09
Bromide	mg/L		<0.1	Jul 20-09
Total Organic Carbon	mg/L		1.7	Jul 20-09
Bromide	mg/L		<0.1	Nov 11-09
Total Organic Carbon	mg/L		<1.0	Nov 11-09

Goulais 2 P/S Additional Raw Water Sampling				
Parameter	Units	MAC	Results	Date Sampled
Bromide	mg/L		P/S Not on	P/S Not on
Total Organic Carbon	mg/L		P/S Not on	P/S Not on
Bromide	mg/L		<0.2	Jun 22-09
Total Organic Carbon	mg/L		2.4	Jun 22-09
Bromide	mg/L		<0.1	Jul 22-09
Total Organic Carbon	mg/L		<1.0	Jul 22-09
Bromide	mg/L		<0.10	Dec 9-09
Total Organic Carbon	mg/L		<1.0	Dec 9-09

Steelton P/S Raw Water Sampling				
Parameter	Units	MAC	Results	Date Sampled
Bromide	mg/L		<0.02	Jan 12-09
Total Organic Carbon	mg/L		<1	Jan 12-09
Bromide	mg/L		<0.20	Apr 7-09
Total Organic Carbon	mg/L		1.1	Apr 7-09
Bromide	mg/L		<0.1	Jul 20-09
Total Organic Carbon	mg/L		<1.0	Jul 20-09
Bromide	mg/L		<0.10	Nov 11-09
Total Organic Carbon	mg/L		<1.0	Nov 11-09

Shannon P/S Raw Water Sampling				
Parameter	Units	MAC	Results	Date Sampled
Bromide	mg/L		0.3	Jan 12-09
Total Organic Carbon	mg/L		1	Jan 12-09
Bromide	mg/L		-	-
Total Organic Carbon	mg/L		-	-
Bromide	mg/L		P/S not on	P/S not on
Total Organic Carbon	mg/L		P/S not on	P/S not on
Bromide	mg/L		<0.10	Dec 30-09
Total Organic Carbon	mg/L		3.1	Dec 30-09

Lorna 1 P/S Additional Raw Water Sampling				
Parameter	Units	MAC	Results	Date Sampled
Bromide	mg/L		P/S Not on	P/S Not on
Total Organic Carbon	mg/L		P/S Not on	P/S Not on
Bromide	mg/L		P/S Not on	P/S Not on
Total Organic Carbon	mg/L		P/S Not on	P/S Not on
Bromide	mg/L		P/S Not on	P/S Not on
Total Organic Carbon	mg/L		P/S Not on	P/S Not on
Bromide	mg/L		P/S Not on	P/S Not on
Total Organic Carbon	mg/L		P/S Not on	P/S Not on

Lorna 2 P/S Additional Raw Water Sampling				
Parameter	Units	MAC	Results	Date Sampled
Bromide	mg/L		0.8	Feb 23-09
Total Organic Carbon	mg/L		2	Feb 23-09
Bromide	mg/L		0.67	Apr 7-09
Total Organic Carbon	mg/L		2.2	Apr 7-09
Bromide	mg/L		0.34	Aug 25-09
Total Organic Carbon	mg/L		1.9	Aug 25-09
Bromide	mg/L		0.64	Nov 11-09
Total Organic Carbon	mg/L		1.3	Nov 11-09

Summary of Inorganic parameters tested during this reporting period or the most recent sample results

WTP (Treated)				
O.Reg 170/03 - Schedule 13-2 (Inorganic – Parameters of Schedule 23)				
Parameter	Units	MAC	Results	Date Sampled
Antimony	mg/L	0.006	<0.0006	Jan 12-09
Arsenic	mg/L	0.025	<0.001	Jan 12-09
Barium	mg/L	1.0	<0.01	Jan 12-09
Boron	mg/L	5.0	<0.05	Jan 12-09
Cadmium	mg/L	0.005	<0.0001	Jan 12-09
Chromium	mg/L	0.05	<0.001	Jan 12-09
Mercury	mg/L	0.001	<0.0001	Jan 12-09
Selenium	mg/L	0.01	<0.005	Jan 12-09
Uranium	mg/L	0.02	<0.005	Jan 12-09
Large Municipal Residential – required once every 12 months Standards of O.Reg 169/03 – Schedule 2				

Goulais 1 P/S (Treated)				
O.Reg 170/03 - Schedule 13-2 (Inorganic – Parameters of Schedule 23)				
Parameter	Units	MAC	Results	Date Sampled
Antimony	mg/L	0.006	<0.0006	Jun 12-09
Arsenic	mg/L	0.025	<0.001	Jun 12-09
Barium	mg/L	1.0	0.033	Jun 12-09
Boron	mg/L	5.0	<0.05	Jun 12-09
Cadmium	mg/L	0.005	<0.0001	Jun 12-09
Chromium	mg/L	0.05	0.0023	Jun 12-09
Mercury	mg/L	0.001	<0.0001	Jun 12-09
Selenium	mg/L	0.01	<0.005	Jun 12-09
Uranium	mg/L	0.02	<0.005	Jun 12-09
Large Municipal Residential – required once every 36 months Standards of O.Reg 169/03 – Schedule 2				

Goulais 2 P/S (Treated)				
O.Reg 170/03 - Schedule 13-2 (Inorganic – Parameters of Schedule 23)				
Parameter	Units	MAC	Results	Date Sampled
Antimony	mg/L	0.006	<0.0006	Jun 22-09
Arsenic	mg/L	0.025	<0.001	Jun 22-09
Barium	mg/L	1.0	0.036	Jun 22-09
Boron	mg/L	5.0	<0.050	Jun 22-09
Cadmium	mg/L	0.005	<0.0001	Jun 22-09
Chromium	mg/L	0.05	0.0021	Jun 22-09
Mercury	mg/L	0.001	<0.0001	Jun 22-09
Selenium	mg/L	0.01	<0.005	Jun 22-09
Uranium	mg/L	0.02	<0.005	Jun 22-09
Large Municipal Residential – required once every 36 months Standards of O.Reg 169/03 – Schedule 2				

Steelton P/S (Treated)				
O.Reg 170/03 - Schedule 13-2 (Inorganic – Parameters of Schedule 23)				
Parameter	Units	MAC	Results	Date Sampled
Antimony	mg/L	0.006	<0.0006	Jan 12-09
Arsenic	mg/L	0.025	<0.001	Jan 12-09
Barium	mg/L	1.0	0.030	Jan 12-09
Boron	mg/L	5.0	<0.050	Jan 12-09
Cadmium	mg/L	0.005	<0.0001	Jan 12-09
Chromium	mg/L	0.05	0.002	Jan 12-09
Mercury	mg/L	0.001	<0.0001	Jan 12-09
Selenium	mg/L	0.01	<0.005	Jan 12-09
Uranium	mg/L	0.02	<0.005	Jan 12-09
Large Municipal Residential – required once every 36 months Standards of O.Reg 169/03 – Schedule 2				

Shannon P/S (Treated)				
O.Reg 170/03 - Schedule 13-2 (Inorganic – Parameters of Schedule 23)				
Parameter	Units	MAC	Results	Date Sampled
Antimony	mg/L	0.006	<0.0006	Jan 12-09
Arsenic	mg/L	0.025	0.003	Jan 12-09
Barium	mg/L	1.0	0.040	Jan 12-09
Boron	mg/L	5.0	0.220	Jan 12-09
Cadmium	mg/L	0.005	<0.0001	Jan 12-09
Chromium	mg/L	0.05	0.003	Jan 12-09
Mercury	mg/L	0.001	<0.0001	Jan 12-09
Selenium	mg/L	0.01	<0.005	Jan 12-09
Uranium	mg/L	0.02	0.009	Jan 12-09
Large Municipal Residential – required once every 36 months Standards of O.Reg 169/03 – Schedule 2				

Lorna 1 P/S (Treated)				
O.Reg 170/03 - Schedule 13-2 (Inorganic – Parameters of Schedule 23)				
Parameter	Units	MAC	Results	Date Sampled
Antimony	mg/L	0.006	-	P/S Not on
Arsenic	mg/L	0.025	-	P/S Not on
Barium	mg/L	1.0	-	P/S Not on
Boron	mg/L	5.0	-	P/S Not on
Cadmium	mg/L	0.005	-	P/S Not on
Chromium	mg/L	0.05	-	P/S Not on
Mercury	mg/L	0.001	-	P/S Not on
Selenium	mg/L	0.01	-	P/S Not on
Uranium	mg/L	0.02	-	P/S Not on
Large Municipal Residential – required once every 36 months Standards of O.Reg 169/03 – Schedule 2				

Lorna 2 P/S (Treated)				
O.Reg 170/03 - Schedule 13-2 (Inorganic – Parameters of Schedule 23)				
Parameter	Units	MAC	Results	Date Sampled
Antimony	mg/L	0.006	<0.0006	May 29-09
Arsenic	mg/L	0.025	0.0029	May 29-09
Barium	mg/L	1.0	0.046	May 29-09
Boron	mg/L	5.0	0.136	May 29-09
Cadmium	mg/L	0.005	<0.0001	May 29-09
Chromium	mg/L	0.05	<0.001	May 29-09
Mercury	mg/L	0.001	<0.0001	May 29-09
Selenium	mg/L	0.01	<0.005	May 29-09
Uranium	mg/L	0.02	0.0073	May 29-09
Large Municipal Residential – required once every 36 months Standards of O.Reg 169/03 – Schedule 2				

WTP (Treated)				
O.Reg 170/03 – Schedule 13-7 (Nitrate/Nitrite – Standards of O.Reg 169/03 – Schedule 2)				
Parameter	Units	MAC	Results	Date Sampled
Nitrite	mg/L	1.0	<0.02	Jan 12-09
Nitrate	mg/L	10.0	0.42	Jan 12-09
Nitrite	mg/L	1.0	<0.02	Apr 7-09
Nitrate	mg/L	10.0	0.368	Apr 7-09
Nitrite	mg/L	1.0	<0.02	Jul 20-09
Nitrate	mg/L	10.0	0.399	Jul 20-09
Nitrite	mg/L	1.0	<0.02	Nov 11-09
Nitrate	mg/L	10.0	0.322	Nov 11-09
Large Municipal Residential – required once every three months				

WTP (Treated)				
O.Reg 170/03 – Schedule 13-8 (Sodium – Standards of O.Reg 169/03 – Schedule 2)				
Parameter	Units	MAC	Results	Date Sampled
Sodium	mg/L	20	1.55	Mar 1-06
Large Municipal Residential – required once every 60 months				

WTP (Treated)				
O.Reg 170/03 – Schedule 13-9 (Flouride – Standards of O.Reg 169/03 – Schedule 2)				
Parameter	Units	MAC	Results	Date Sampled
Flouride	mg/L	1.5	0.07	Mar 1-06
Large Municipal Residential – required once every 60 months				

Goulais 1 P/S (Treated)				
O.Reg 170/03 – Schedule 13-7 (Nitrate/Nitrite – Standards of O.Reg 169/03 – Schedule 2)				
Parameter	Units	MAC	Results	Date Sampled
Nitrite	mg/L	1.0	-	P/S Not on
Nitrate	mg/L	10.0	-	P/S Not on
Nitrite	mg/L	1.0	<0.02	Jun 12-09
Nitrate	mg/L	10.0	0.937	Jun 12-09
Nitrite	mg/L	1.0	<0.02	Jul 20-09
Nitrate	mg/L	10.0	1.05	Jul 20-09
Nitrite	mg/L	1.0	<0.02	Nov 11-09
Nitrate	mg/L	10.0	0.931	Nov 11-09
Large Municipal Residential – required once every three months				

Goulais 1 P/S (Treated)				
O.Reg 170/03 – Schedule 13-8 (Sodium – Standards of O.Reg 169/03 – Schedule 2)				
Parameter	Units	MAC	Results	Date Sampled
Sodium	mg/L	20	10.9	Mar 1-06
Large Municipal Residential – required once every 60 months				

Goulais 1 P/S (Treated)				
O.Reg 170/03 – Schedule 13-9 (Flouride – Standards of O.Reg 169/03 – Schedule 2)				
Parameter	Units	MAC	Results	Date Sampled
Fluoride	mg/L	1.5	0.07	Mar 1-06
Large Municipal Residential – required once every 60 months				

Goulais 2 P/S (Treated)				
O.Reg 170/03 – Schedule 13-7 (Nitrate/Nitrite – Standards of O.Reg 169/03 – Schedule 2)				
Parameter	Units	MAC	Results	Date Sampled
Nitrite	mg/L	1.0	-	P/S Not on
Nitrate	mg/L	10.0	-	P/S Not on
Nitrite	mg/L	1.0	<0.02	Jun 22-09
Nitrate	mg/L	10.0	0.932	Jun 22-09
Nitrite	mg/L	1.0	<0.02	Jul 22-09
Nitrate	mg/L	10.0	1.09	Jul 22-09
Nitrite	mg/L	1.0	<0.02	Dec 9-09
Nitrate	mg/L	10.0	0.954	Dec 9-09
Large Municipal Residential – required once every three months				

Goulais 2 P/S (Treated)				
O.Reg 170/03 – Schedule 13-8 (Sodium – Standards of O.Reg 169/03 – Schedule 2)				
Parameter	Units	MAC	Results	Date Sampled
Sodium	mg/L	20	11.2	Dec 30-09
Large Municipal Residential – required once every 60 months				

Goulais 2 P/S (Treated)				
O.Reg 170/03 – Schedule 13-9 (Fluoride – Standards of O.Reg 169/03 – Schedule 2)				
Parameter	Units	MAC	Results	Date Sampled
Fluoride	mg/L	1.5	<0.03	Dec 30-09
Large Municipal Residential – required once every 60 months				

Steelton P/S (Treated)				
O.Reg 170/03 – Schedule 13-7 (Nitrate/Nitrite – Standards of O.Reg 169/03 – Schedule 2)				
Parameter	Units	MAC	Results	Date Sampled
Nitrite	mg/L	1.0	<0.02	Jan 12-09
Nitrate	mg/L	10.0	1.05	Jan 12-09
Nitrite	mg/L	1.0	<0.02	Apr 7-09
Nitrate	mg/L	10.0	1.00	Apr 7-09
Nitrite	mg/L	1.0	<0.02	Jul 20-09
Nitrate	mg/L	10.0	1.10	Jul 20-09
Nitrite	mg/L	1.0	<0.02	Nov 11-09
Nitrate	mg/L	10.0	0.88	Nov 11-09
Large Municipal Residential – required once every three months				

Steelton P/S (Treated)				
O.Reg 170/03 – Schedule 13-8 (Sodium – Standards of O.Reg 169/03 – Schedule 2)				
Parameter	Units	MAC	Results	Date Sampled
Sodium	mg/L	20	8.69	Mar 1-06
Large Municipal Residential – required once every 60 months				

Steelton P/S (Treated)				
O.Reg 170/03 – Schedule 13-9 (Flouride – Standards of O.Reg 169/03 – Schedule 2)				
Parameter	Units	MAC	Results	Date Sampled
Fluoride	mg/L	1.5	0.09	Mar 1-06
Large Municipal Residential – required once every 60 months				

Shannon P/S (Treated)				
O.Reg 170/03 – Schedule 13-7 (Nitrate/Nitrite – Standards of O.Reg 169/03 – Schedule 2)				
Parameter	Units	MAC	Results	Date Sampled
Nitrite	mg/L	1.0	<0.02	Jan 12-09
Nitrate	mg/L	10.0	<0.03	Jan 12-09
Nitrite	mg/L	1.0	<0.02	May 27-09
Nitrate	mg/L	10.0	<0.03	May 27-09
Nitrite	mg/L	1.0	P/S Not on	P/S Not on
Nitrate	mg/L	10.0	P/S Not on	P/S Not on
Nitrite	mg/L	1.0	<0.02	Dec 30-09
Nitrate	mg/L	10.0	<0.03	Dec 30-09
Large Municipal Residential – required once every three months				

Shannon P/S (Treated)				
O.Reg 170/03 – Schedule 13-8 (Sodium – Standards of O.Reg 169/03 – Schedule 2)				
Parameter	Units	MAC	Results	Date Sampled
Sodium	mg/L	20	30.3&28.0	Jul 24-06
Large Municipal Residential – required once every 60 months				

Shannon P/S (Treated)				
O.Reg 170/03 – Schedule 13-9 (Flouride – Standards of O.Reg 169/03 – Schedule 2)				
Parameter	Units	MAC	Results	Date Sampled
Fluoride	mg/L	1.5	0.24	Jul 24-06
Large Municipal Residential – required once every 60 months				

Lorna 1 P/S (Treated)				
O.Reg 170/03 – Schedule 13-7 (Nitrate/Nitrite – Standards of O.Reg 169/03 – Schedule 2)				
Parameter	Units	MAC	Results	Date Sampled
Nitrite	mg/L	1.0	-	P/S Not on
Nitrate	mg/L	10.0	-	P/S Not on
Nitrite	mg/L	1.0	-	P/S Not on
Nitrate	mg/L	10.0	-	P/S Not on
Nitrite	mg/L	1.0	-	P/S Not on
Nitrate	mg/L	10.0	-	P/S Not on
Nitrite	mg/L	1.0	-	P/S Not on
Nitrate	mg/L	10.0	-	P/S Not on
Large Municipal Residential – required once every three months				

Lorna 1 P/S (Treated)				
O.Reg 170/03 – Schedule 13-8 (Sodium – Standards of O.Reg 169/03 – Schedule 2)				
Parameter	Units	MAC	Results	Date Sampled
Sodium	mg/L	20	-	P/S Not on
Large Municipal Residential – required once every 60 months				

Lorna 1 P/S (Treated)				
O.Reg 170/03 – Schedule 13-9 (Flouride – Standards of O.Reg 169/03 – Schedule 2)				
Parameter	Units	MAC	Results	Date Sampled
Fluoride	mg/L	1.5	-	P/S Not on
Large Municipal Residential – required once every 60 months				

Lorna 2 P/S (Treated)				
O.Reg 170/03 – Schedule 13-7 (Nitrate/Nitrite – Standards of O.Reg 169/03 – Schedule 2)				
Parameter	Units	MAC	Results	Date Sampled
Nitrite	mg/L	1.0	<0.02	Feb 23-09
Nitrate	mg/L	10.0	<0.03	Feb 23-09
Nitrite	mg/L	1.0	<0.04	Apr 7-09
Nitrate	mg/L	10.0	<0.03	Apr 7-09
Nitrite	mg/L	1.0	<0.04	Aug 25-09
Nitrate	mg/L	10.0	<0.03	Aug 25-09
Nitrite	mg/L	1.0	<0.02	Nov 11-09
Nitrate	mg/L	10.0	<0.03	Nov 11-09
Large Municipal Residential – required once every three months				

Lorna 2 P/S (Treated)				
O.Reg 170/03 – Schedule 13-8 (Sodium – Standards of O.Reg 169/03 – Schedule 2)				
Parameter	Units	MAC	Results	Date Sampled
Sodium	mg/L	20	32	Dec 12-07
Large Municipal Residential – required once every 60 months				

Lorna 2 P/S (Treated)				
O.Reg 170/03 – Schedule 13-9 (Flouride – Standards of O.Reg 169/03 – Schedule 2)				
Parameter	Units	MAC	Results	Date Sampled
Fluoride	mg/L	1.5	<0.03	Dec 12-07
Large Municipal Residential – required once every 60 months				

Summary of lead testing under Schedule 15.1 during this reporting period

(applicable to the following drinking water systems; large municipal residential systems, small municipal residential systems, and non-municipal year-round residential systems)

Location Type	Number of Samples	Range of Lead Results (min#) – (max #)	Number of Exceedances
Plumbing - Residential	256	<1.0 – 69 ug/L	35
Plumbing – Non Residential	21	<1.0 – 10.5 ug/L	2
Distribution	35	<1.0 – 77.0 ug/L *	1

* Hydrant had been re-sampled with a result of 4.7 ug/L

Summary of Organic parameters sampled during this reporting period or the most recent sample results

WTP (Treated)					
O.Reg 170/03 - Schedule 13-4 (Organics - Parameters of Schedule 24)					
Parameter	Units	MAC	Results	Date Sampled	Exceedence
Alachlor	mg/L	0.005	<0.0001	Jan 12-09	No
Aldicarb	mg/L	0.009	<0.001	Jan 12-09	No
Aldrin+Dieldrin	mg/L	0.0007	<0.00004	Jan 12-09	No
Atrazine+N-dealkylated metabolites	mg/L	0.005	<0.0002	Jan 12-09	No
Azinphos-methyl	mg/L	0.02	<0.0001	Jan 12-09	No
Bendiocarb	mg/L	0.04	<0.0002	Jan 12-09	No
Benzene	mg/L	0.005	<0.0005	Jan 12-09	No
Benzo(a)pyrene	mg/L	0.00001	<0.00001	Jan 12-09	No
Bromoxynil	mg/L	0.005	<0.0002	Jan 12-09	No
Carbaryl	mg/L	0.09	<0.0002	Jan 12-09	No
Carbofuran	mg/L	0.09	<0.0002	Jan 12-09	No
Carbon Tetrachloride	mg/L	0.005	<0.0005	Jan 12-09	No
Chlordane (Total)	mg/L	0.007	<0.0003	Jan 12-09	No
Chlorpyrifos	mg/L	0.09	<0.0001	Jan 12-09	No
Cyanazine	mg/L	0.01	<0.0001	Jan 12-09	No
Diazinon	mg/L	0.02	<0.0001	Jan 12-09	No
Dicamba	mg/L	0.12	<0.0002	Jan 12-09	No
1,2-Dichlorobenzene	mg/L	0.2	<0.0005	Jan 12-09	No
1,4-Dichlorobenzene	mg/L	0.005	<0.0005	Jan 12-09	No
DDT + metabolites	mg/L	0.03	<0.0004	Jan 12-09	No
1,2-Dichlorethane	mg/L	0.005	<0.0005	Jan 12-09	No
1,1-Dichloroethylene	mg/L	0.014	<0.0005	Jan 12-09	No
Dichloromethane	mg/L	0.05	<0.0005	Jan 12-09	No
2,4-Dichlorophenol	mg/L	0.9	<0.0005	Jan 12-09	No
2,4-D	mg/L	0.1	<0.0002	Jan 12-09	No
Diclofop-methyl	mg/L	0.009	<0.0002	Jan 12-09	No
Dimethoate	mg/L	0.02	<0.0001	Jan 12-09	No
Dinoseb	mg/L	0.01	<0.0002	Jan 12-09	No
Diquat	mg/L	0.07	<0.001	Jan 12-09	No
Diuron	mg/L	0.15	<0.001	Jan 12-09	No
Glyphosate	mg/L	0.28	<0.005	Jan 12-09	No
Heptachlor+ Heptachlor Epoxide	mg/L	0.003	<0.0002	Jan 12-09	No
Lindane (Total)	mg/L	0.004	<0.0001	Jan 12-09	No
Malathion	mg/L	0.19	<0.0001	Jan 12-09	No
Methoxychlor	mg/L	0.9	<0.0001	Jan 12-09	No
Metolachlor	mg/L	0.05	<0.0001	Jan 12-09	No
Metribuzin	mg/L	0.09	<0.0001	Jan 12-09	No
Monochlorobenzene	mg/L	0.09	<0.0005	Jan 12-09	No
Paraquat	mg/L	0.01	<0.001	Jan 12-09	No
Parathion	mg/L	0.05	<0.0001	Jan 12-09	No
Pentachlorophenol	mg/L	0.06	<0.0005	Jan 12-09	No
Phorate	mg/L	0.002	<0.0001	Jan 12-09	No
Picloram	mg/L	0.19	<0.0002	Jan 12-09	No
Total PCB	mg/L	0.003	<0.00002	Jan 12-09	No
Prometryne	mg/L	0.001	<0.0001	Jan 12-09	No
Simazine	mg/L	0.01	<0.0001	Jan 12-09	No

WTP (Treated)					
O.Reg 170/03 - Schedule 13-4 (Organics - Parameters of Schedule 24)					
Parameter	Units	MAC	Results	Date Sampled	Exceedence
Temephos	mg/L	0.28	<0.0001	Jan 12-09	No
Terbufos	mg/L	0.001	<0.0002	Jan 12-09	No
Tetrachloroethylene	mg/L	0.03	<0.0005	Jan 12-09	No
2,3,4,6-Tetrachlorophenol	mg/L	0.1	<0.0005	Jan 12-09	No
Triallate	mg/L	0.23	<0.0001	Jan 12-09	No
Trichlorethylene	mg/L	0.005	<0.0005	Jan 12-09	No
2,4,6-Trichlorophenol	mg/L	0.005	<0.0005	Jan 12-09	No
2,4,5-T	mg/L	0.28	<0.0002	Jan 12-09	No
Trifluralin	mg/L	0.045	<0.0001	Jan 12-09	No
Vinyl chloride	mg/L	0.002	<0.0005	Jan 12-09	No
Large Municipal Residential – required once every 12 months. Standards of O.Reg 169/03 – Schedule 2					

Goulais 1 P/S (Treated)					
O.Reg 170/03 - Schedule 13-4 (Organics - Parameters of Schedule 24)					
Parameter	Units	MAC	Results	Date Sampled	Exceedence
Alachlor	mg/L	0.005	<0.0001	Jun 12-09	No
Aldicarb	mg/L	0.009	<0.001	Jun 12-09	No
Aldrin+Dieldrin	mg/L	0.0007	<0.00004	Jun 12-09	No
Atrazine+N-dealkylated metabolites	mg/L	0.005	<0.0002	Jun 12-09	No
Azinphos-methyl	mg/L	0.02	<0.0001	Jun 12-09	No
Bendiocarb	mg/L	0.04	<0.0002	Jun 12-09	No
Benzene	mg/L	0.005	<0.0005	Jun 12-09	No
Benzo(a)pyrene	mg/L	0.00001	<0.00001	Jun 12-09	No
Bromoxynil	mg/L	0.005	<0.0002	Jun 12-09	No
Carbaryl	mg/L	0.09	<0.0002	Jun 12-09	No
Carbofuran	mg/L	0.09	<0.0002	Jun 12-09	No
Carbon Tetrachloride	mg/L	0.005	<0.0005	Jun 12-09	No
Chlordane (Total)	mg/L	0.007	<0.0003	Jun 12-09	No
Chlorpyrifos	mg/L	0.09	<0.0001	Jun 12-09	No
Cyanazine	mg/L	0.01	<0.0001	Jun 12-09	No
Diazinon	mg/L	0.02	<0.0001	Jun 12-09	No
Dicamba	mg/L	0.12	<0.0002	Jun 12-09	No
1,2-Dichlorobenzene	mg/L	0.2	<0.0005	Jun 12-09	No
1,4-Dichlorobenzene	mg/L	0.005	<0.0005	Jun 12-09	No
DDT + metabolites	mg/L	0.03	<0.0004	Jun 12-09	No
1,2-Dichlorethane	mg/L	0.005	<0.0005	Jun 12-09	No
1,1-Dichloroethylene	mg/L	0.014	<0.0005	Jun 12-09	No
Dichloromethane	mg/L	0.05	<0.0005	Jun 12-09	No
2,4-Dichlorophenol	mg/L	0.9	<0.0005	Jun 12-09	No
2,4-D	mg/L	0.1	<0.0002	Jun 12-09	No
Diclofop-methyl	mg/L	0.009	<0.0002	Jun 12-09	No
Dimethoate	mg/L	0.02	<0.0001	Jun 12-09	No
Dinoseb	mg/L	0.01	<0.0002	Jun 12-09	No
Diquat	mg/L	0.07	<0.001	Jun 12-09	No
Diuron	mg/L	0.15	<0.001	Jun 12-09	No
Glyphosate	mg/L	0.28	<0.005	Jun 12-09	No
Heptachlor+ Heptachlor epoxide	mg/L	0.003	<0.0002	Jun 12-09	No

Goulais 1 P/S (Treated)					
O.Reg 170/03 - Schedule 13-4 (Organics - Parameters of Schedule 24)					
Parameter	Units	MAC	Results	Date Sampled	Exceedence
Lindane (Total)	mg/L	0.004	<0.0001	Jun 12-09	No
Malathion	mg/L	0.19	<0.0001	Jun 12-09	No
Methoxychlor	mg/L	0.9	<0.0001	Jun 12-09	No
Metolachlor	mg/L	0.05	<0.0001	Jun 12-09	No
Metribuzin	mg/L	0.09	<0.0001	Jun 12-09	No
Monochlorobenzene	mg/L	0.09	<0.0005	Jun 12-09	No
Paraquat	mg/L	0.01	<0.001	Jun 12-09	No
Parathion	mg/L	0.05	<0.0001	Jun 12-09	No
Pentachlorophenol	mg/L	0.06	<0.0005	Jun 12-09	No
Phorate	mg/L	0.002	<0.0001	Jun 12-09	No
Picloram	mg/L	0.19	<0.0002	Jun 12-09	No
Total PCB	mg/L	0.003	<0.00002	Jun 12-09	No
Prometryne	mg/L	0.001	<0.0001	Jun 12-09	No
Simazine	mg/L	0.01	<0.0001	Jun 12-09	No
Temephos	mg/L	0.28	<0.0001	Jun 12-09	No
Terbufos	mg/L	0.001	<0.0002	Jun 12-09	No
Tetrachloroethylene	mg/L	0.03	<0.0005	Jun 12-09	No
2,3,4,6-Tetrachlorophenol	mg/L	0.1	<0.0005	Jun 12-09	No
Triallate	mg/L	0.23	<0.0001	Jun 12-09	No
Trichlorethylene	mg/L	0.005	<0.0005	Jun 12-09	No
2,4,6-Trichlorphenol	mg/L	0.005	<0.0005	Jun 12-09	No
Trifluralin	mg/L	0.045	<0.0001	Jun 12-09	No
2,4,5-T	mg/L	0.28	<0.0002	Jun 12-09	No
Vinyl chloride	mg/L	0.002	<0.0005	Jun 12-09	No
Large Municipal Residential – required once every 36 months. Standards of O.Reg 169/03 – Schedule 2					

Goulais 2 P/S (Treated)					
O.Reg 170/03 - Schedule 13-4 (Organics - Parameters of Schedule 24)					
Parameter	Units	MAC	Results	Date Sampled	Exceedence
Achlor	mg/L	0.005	<0.0001	Jun 22-09	No
Aldicarb	mg/L	0.009	<0.001	Jun 22-09	No
Aldrin+Dieldrin	mg/L	0.0007	<0.00004	Jun 22-09	No
Atrazine+N-dealkylated metabolites	mg/L	0.005	<0.0002	Jun 22-09	No
Azinphos-methyl	mg/L	0.02	<0.0001	Jun 22-09	No
Bendiocarb	mg/L	0.04	<0.0002	Jun 22-09	No
Benzene	mg/L	0.005	<0.0005	Jun 22-09	No
Benzo(a)pyrene	mg/L	0.00001	<0.00001	Jun 22-09	No
Bromoxynil	mg/L	0.005	<0.0002	Jun 22-09	No
Carbaryl	mg/L	0.09	<0.0002	Jun 22-09	No
Carbofuran	mg/L	0.09	<0.0002	Jun 22-09	No
Carbon Tetrachloride	mg/L	0.005	<0.0005	Jun 22-09	No
Chlordane (Total)	mg/L	0.007	<0.0003	Jun 22-09	No
Chlorpyrifos	mg/L	0.09	<0.0001	Jun 22-09	No
Cyanazine	mg/L	0.01	<0.0001	Jun 22-09	No
Diazinon	mg/L	0.02	<0.0001	Jun 22-09	No
Dicamba	mg/L	0.12	<0.0002	Jun 22-09	No

Goulais 2 P/S (Treated)					
O.Reg 170/03 - Schedule 13-4 (Organics - Parameters of Schedule 24)					
Parameter	Units	MAC	Results	Date Sampled	Exceedence
1,2-Dichlorobenzene	mg/L	0.2	<0.0005	Jun 22-09	No
1,4-Dichlorobenzene	mg/L	0.005	<0.0005	Jun 22-09	No
DDT + metabolites	mg/L	0.03	<0.0004	Jun 22-09	No
1,2-Dichlorethane	mg/L	0.005	<0.0005	Jun 22-09	No
1,1-Dichloroethylene	mg/L	0.014	<0.0005	Jun 22-09	No
Dichloromethane	mg/L	0.05	<0.0005	Jun 22-09	No
2,4-Dichlorophenol	mg/L	0.9	<0.0005	Jun 22-09	No
2,4-D	mg/L	0.1	<0.0002	Jun 22-09	No
Diclofop-methyl	mg/L	0.009	<0.0002	Jun 22-09	No
Dimethoate	mg/L	0.02	<0.0001	Jun 22-09	No
Dinoseb	mg/L	0.01	<0.0002	Jun 22-09	No
Diquat	mg/L	0.07	<0.001	Jun 22-09	No
Diuron	mg/L	0.15	<0.001	Jun 22-09	No
Glyphosate	mg/L	0.28	<0.005	Jun 22-09	No
Heptachlor+ Heptachlor epoxide	mg/L	0.003	<0.0002	Jun 22-09	No
Lindane (Total)	mg/L	0.004	<0.0001	Jun 22-09	No
Malathion	mg/L	0.19	<0.0001	Jun 22-09	No
Methoxychlor	mg/L	0.9	<0.0001	Jun 22-09	No
Metolachlor	mg/L	0.05	<0.0001	Jun 22-09	No
Metribuzin	mg/L	0.09	<0.0001	Jun 22-09	No
Monochlorobenzene	mg/L	0.09	<0.0005	Jun 22-09	No
Paraquat	mg/L	0.01	<0.001	Jun 22-09	No
Parathion	mg/L	0.05	<0.0001	Jun 22-09	No
Pentachlorophenol	mg/L	0.06	<0.0005	Jun 22-09	No
Phorate	mg/L	0.002	<0.0001	Jun 22-09	No
Picloram	mg/L	0.19	<0.0002	Jun 22-09	No
Total PCB	mg/L	0.003	<0.00002	Jun 22-09	No
Prometryne	mg/L	0.001	<0.0001	Jun 22-09	No
Simazine	mg/L	0.01	<0.0001	Jun 22-09	No
Temephos	mg/L	0.28	<0.0001	Jun 22-09	No
Terbufos	mg/L	0.001	<0.0002	Jun 22-09	No
Tetrachloroethylene	mg/L	0.03	<0.0005	Jun 22-09	No
2,3,4,6-Tetrachlorophenol	mg/L	0.1	<0.0005	Jun 22-09	No
Triallate	mg/L	0.23	<0.0001	Jun 22-09	No
Trichlorethylene	mg/L	0.005	<0.0005	Jun 22-09	No
2,4,6-Trichlorophenol	mg/L	0.005	<0.0005	Jun 22-09	No
Trifluralin	mg/L	0.045	<0.0001	Jun 22-09	No
2,4,5-T	mg/L	0.28	<0.0002	Jun 22-09	No
Vinyl chloride	mg/L	0.002	<0.0005	Jun 22-09	No
Large Municipal Residential – required once every 36 months. Standards of O.Reg 169/03 – Schedule 2					

Steelson P/S (Treated)					
O.Reg 170/03 - Schedule 13-4 (Organics - Parameters of Schedule 24)					
Parameter	Units	MAC	Results	Date Sampled	Exceedence
Alachlor	mg/L	0.005	<0.0001	Jan 12-09	No
Aldicarb	mg/L	0.009	<0.001	Jan 12-09	No
Aldrin+Dieldrin	mg/L	0.0007	<0.00004	Jan 12-09	No
Atrazine+N-dealkylated metabolites	mg/L	0.005	<0.0002	Jan 12-09	No

Steelton P/S (Treated)					
O.Reg 170/03 - Schedule 13-4 (Organics - Parameters of Schedule 24)					
Parameter	Units	MAC	Results	Date Sampled	Exceedence
Azinphos-methyl	mg/L	0.02	<0.0001	Jan 12-09	No
Bendiocarb	mg/L	0.04	<0.0002	Jan 12-09	No
Benzene	mg/L	0.005	<0.0005	Jan 12-09	No
Benzo(a)pyrene	mg/L	0.00001	<0.00001	Jan 12-09	No
Bromoxynil	mg/L	0.005	<0.0002	Jan 12-09	No
Carbaryl	mg/L	0.09	<0.0002	Jan 12-09	No
Carbofuran	mg/L	0.09	<0.0002	Jan 12-09	No
Carbon Tetrachloride	mg/L	0.005	<0.0005	Jan 12-09	No
Chlordane (Total)	mg/L	0.007	<0.0003	Jan 12-09	No
Chlorpyrifos	mg/L	0.09	<0.0001	Jan 12-09	No
Cyanazine	mg/L	0.01	<0.0001	Jan 12-09	No
Diazinon	mg/L	0.02	<0.0001	Jan 12-09	No
Dicamba	mg/L	0.12	<0.0002	Jan 12-09	No
1,2-Dichlorobenzene	mg/L	0.2	<0.0005	Jan 12-09	No
1,4-Dichlorobenzene	mg/L	0.005	<0.0005	Jan 12-09	No
DDT + metabolites	mg/L	0.03	<0.0004	Jan 12-09	No
1,2-Dichlorethane	mg/L	0.005	<0.0005	Jan 12-09	No
1,1-Dichloroethylene	mg/L	0.014	<0.0005	Jan 12-09	No
Dichloromethane	mg/L	0.05	<0.0005	Jan 12-09	No
2,4-Dichlorophenol	mg/L	0.9	<0.0005	Jan 12-09	No
2,4-D	mg/L	0.1	<0.0002	Jan 12-09	No
Diclofop-methyl	mg/L	0.009	<0.0002	Jan 12-09	No
Dimethoate	mg/L	0.02	<0.0001	Jan 12-09	No
Dinoseb	mg/L	0.01	<0.0002	Jan 12-09	No
Diquat	mg/L	0.07	<0.001	Jan 12-09	No
Diuron	mg/L	0.15	<0.001	Jan 12-09	No
Glyphosate	mg/L	0.28	<0.005	Jan 12-09	No
Heptachlor+ Heptachlor epoxide	mg/L	0.003	<0.0002	Jan 12-09	No
Lindane (Total)	mg/L	0.004	<0.0001	Jan 12-09	No
Malathion	mg/L	0.19	<0.0001	Jan 12-09	No
Methoxychlor	mg/L	0.9	<0.0001	Jan 12-09	No
Metolachlor	mg/L	0.05	<0.0001	Jan 12-09	No
Metribuzin	mg/L	0.09	<0.0001	Jan 12-09	No
Monochlorobenzene	mg/L	0.09	<0.0005	Jan 12-09	No
Paraquat	mg/L	0.01	<0.001	Jan 12-09	No
Parathion	mg/L	0.05	<0.0001	Jan 12-09	No
Pentachlorophenol	mg/L	0.06	<0.0005	Jan 12-09	No
Phorate	mg/L	0.002	<0.0001	Jan 12-09	No
Picloram	mg/L	0.19	<0.0002	Jan 12-09	No
Total PCB	mg/L	0.003	<0.00002	Jan 12-09	No
Prometryne	mg/L	0.001	<0.0001	Jan 12-09	No
Simazine	mg/L	0.01	<0.0001	Jan 12-09	No
Temephos	mg/L	0.28	<0.0001	Jan 12-09	No
Terbufos	mg/L	0.001	<0.0002	Jan 12-09	No
Tetrachloroethylene	mg/L	0.03	<0.0005	Jan 12-09	No
2,3,4,6-Tetrachlorophenol	mg/L	0.1	<0.0005	Jan 12-09	No
Triallate	mg/L	0.23	<0.0001	Jan 12-09	No
Trichlorethylene	mg/L	0.005	<0.0005	Jan 12-09	No

Steelton P/S (Treated)					
O.Reg 170/03 - Schedule 13-4 (Organics - Parameters of Schedule 24)					
Parameter	Units	MAC	Results	Date Sampled	Exceedence
2,4,6-Trichlorophenol	mg/L	0.005	<0.0005	Jan 12-09	No
Trifluralin	mg/L	0.045	<0.0001	Jan 12-09	No
2,4,5-T	mg/L	0.28	<0.0002	Jan 12-09	No
Vinyl chloride	mg/L	0.002	<0.0005	Jan 12-09	No
Large Municipal Residential – required once every 36 months. Standards of O.Reg 169/03 – Schedule 2					

Shannon P/S (Treated)					
O.Reg 170/03 - Schedule 13-4 (Organics - Parameters of Schedule 24)					
Parameter	Units	MAC	Results	Date Sampled	Exceedence
Alachlor	mg/L	0.005	<0.0001	Jan 12-09	No
Aldicarb	mg/L	0.009	<0.001	Jan 12-09	No
Aldrin+Dieldrin	mg/L	0.0007	<0.00004	Jan 12-09	No
Atrazine+N-dealkylated metabolites	mg/L	0.005	<0.0002	Jan 12-09	No
Azinphos-methyl	mg/L	0.02	<0.0001	Jan 12-09	No
Bendiocarb	mg/L	0.04	<0.0002	Jan 12-09	No
Benzene	mg/L	0.005	<0.0005	Jan 12-09	No
Benzo(a)pyrene	mg/L	0.00001	<0.00001	Jan 12-09	No
Bromoxynil	mg/L	0.005	<0.0002	Jan 12-09	No
Carbaryl	mg/L	0.09	<0.0002	Jan 12-09	No
Carbofuran	mg/L	0.09	<0.0002	Jan 12-09	No
Carbon Tetrachloride	mg/L	0.005	<0.0005	Jan 12-09	No
Chlordane (Total)	mg/L	0.007	<0.0003	Jan 12-09	No
Chlorpyrifos	mg/L	0.09	<0.0001	Jan 12-09	No
Cyanazine	mg/L	0.01	<0.0001	Jan 12-09	No
Diazinon	mg/L	0.02	<0.0001	Jan 12-09	No
Dicamba	mg/L	0.12	<0.0002	Jan 12-09	No
1,2-Dichlorobenzene	mg/L	0.2	<0.0005	Jan 12-09	No
1,4-Dichlorobenzene	mg/L	0.005	<0.0005	Jan 12-09	No
DDT + metabolites	mg/L	0.03	<0.0004	Jan 12-09	No
1,2-Dichloroethane	mg/L	0.005	<0.0005	Jan 12-09	No
1,1-Dichloroethylene	mg/L	0.014	<0.0005	Jan 12-09	No
Dichloromethane	mg/L	0.05	<0.0005	Jan 12-09	No
2,4-Dichlorophenol	mg/L	0.9	<0.0005	Jan 12-09	No
2,4-D	mg/L	0.1	<0.0002	Jan 12-09	No
Diclofop-methyl	mg/L	0.009	<0.0002	Jan 12-09	No
Dimethoate	mg/L	0.02	<0.0001	Jan 12-09	No
Dinoseb	mg/L	0.01	<0.0002	Jan 12-09	No
Diquat	mg/L	0.07	<0.001	Jan 12-09	No
Diuron	mg/L	0.15	<0.001	Jan 12-09	No
Glyphosate	mg/L	0.28	<0.005	Jan 12-09	No
Heptachlor+ Heptachlor epoxide	mg/L	0.003	<0.0002	Jan 12-09	No
Lindane (Total)	mg/L	0.004	<0.0001	Jan 12-09	No
Malathion	mg/L	0.19	<0.0001	Jan 12-09	No
Methoxychlor	mg/L	0.9	<0.0001	Jan 12-09	No
Metolachlor	mg/L	0.05	<0.0001	Jan 12-09	No
Metribuzin	mg/L	0.09	<0.0001	Jan 12-09	No
Monochlorobenzene	mg/L	0.09	<0.0005	Jan 12-09	No

Shannon P/S (Treated)					
O.Reg 170/03 - Schedule 13-4 (Organics - Parameters of Schedule 24)					
Parameter	Units	MAC	Results	Date Sampled	Exceedence
Paraquat	mg/L	0.01	<0.001	Jan 12-09	No
Parathion	mg/L	0.05	<0.0001	Jan 12-09	No
Pentachlorophenol	mg/L	0.06	<0.0005	Jan 12-09	No
Phorate	mg/L	0.002	<0.0001	Jan 12-09	No
Picloram	mg/L	0.19	<0.0002	Jan 12-09	No
Total PCB	mg/L	0.003	<0.00002	Jan 12-09	No
Prometryne	mg/L	0.001	<0.0001	Jan 12-09	No
Simazine	mg/L	0.01	<0.0001	Jan 12-09	No
Temephos	mg/L	0.28	<0.0001	Jan 12-09	No
Terbufos	mg/L	0.001	<0.0002	Jan 12-09	No
Tetrachloroethylene	mg/L	0.03	<0.0005	Jan 12-09	No
2,3,4,6-Tetrachlorophenol	mg/L	0.1	<0.0005	Jan 12-09	No
Triallate	mg/L	0.23	<0.0001	Jan 12-09	No
Trichloroethylene	mg/L	0.005	<0.0005	Jan 12-09	No
2,4,6-Trichlorophenol	mg/L	0.005	<0.0005	Jan 12-09	No
Trifluralin	mg/L	0.045	<0.0001	Jan 12-09	No
2,4,5-T	mg/L	0.28	<0.0002	Jan 12-09	No
Vinyl chloride	mg/L	0.002	<0.0005	Jan 12-09	No
Large Municipal Residential – required once every 36 months. Standards of O.Reg 169/03 – Schedule 2					

Lorna 2 P/S (Treated)					
O.Reg 170/03 - Schedule 13-4 (Organics - Parameters of Schedule 24)					
Parameter	Units	MAC	Results	Date Sampled	Exceedence
Alachlor	mg/L	0.005	<0.0001	May 29-09	No
Aldicarb	mg/L	0.009	<0.001	May 29-09	No
Aldrin+Dieldrin	mg/L	0.0007	<0.00004	May 29-09	No
Atrazine+N-dealkylated metabolites	mg/L	0.005	<0.0002	May 29-09	No
Azinphos-methyl	mg/L	0.02	<0.0001	May 29-09	No
Bendiocarb	mg/L	0.04	<0.0002	May 29-09	No
Benzene	mg/L	0.005	<0.0005	May 29-09	No
Benzo(a)pyrene	mg/L	0.00001	<0.00001	May 29-09	No
Bromoxynil	mg/L	0.005	<0.0002	May 29-09	No
Carbaryl	mg/L	0.09	<0.0002	May 29-09	No
Carbofuran	mg/L	0.09	<0.0002	May 29-09	No
Carbon Tetrachloride	mg/L	0.005	<0.0005	May 29-09	No
Chlordane (Total)	mg/L	0.007	<0.0003	May 29-09	No
Chlorpyrifos	mg/L	0.09	<0.0001	May 29-09	No
Cyanazine	mg/L	0.01	<0.0001	May 29-09	No
Diazinon	mg/L	0.02	<0.0001	May 29-09	No
Dicamba	mg/L	0.12	<0.0002	May 29-09	No
1,2-Dichlorobenzene	mg/L	0.2	<0.0005	May 29-09	No
1,4-Dichlorobenzene	mg/L	0.005	<0.0005	May 29-09	No
DDT + metabolites	mg/L	0.03	<0.0004	May 29-09	No
1,2-Dichloroethane	mg/L	0.005	<0.0005	May 29-09	No
1,1-Dichloroethylene	mg/L	0.014	<0.0005	May 29-09	No
Dichloromethane	mg/L	0.05	<0.0005	May 29-09	No
2,4-Dichlorophenol	mg/L	0.9	<0.0005	May 29-09	No

Lorna 2 P/S (Treated)					
O.Reg 170/03 - Schedule 13-4 (Organics - Parameters of Schedule 24)					
Parameter	Units	MAC	Results	Date Sampled	Exceedence
2,4-D	mg/L	0.1	<0.0002	May 29-09	No
Diclofop-methyl	mg/L	0.009	<0.0002	May 29-09	No
Dimethoate	mg/L	0.02	<0.0001	May 29-09	No
Dinoseb	mg/L	0.01	<0.0002	May 29-09	No
Diquat	mg/L	0.07	<0.001	May 29-09	No
Diuron	mg/L	0.15	<0.001	May 29-09	No
Glyphosate	mg/L	0.28	<0.005	May 29-09	No
Heptachlor+ Heptachlor epoxide	mg/L	0.003	<0.0002	May 29-09	No
Lindane (Total)	mg/L	0.004	<0.0001	May 29-09	No
Malathion	mg/L	0.19	<0.0001	May 29-09	No
Methoxychlor	mg/L	0.9	<0.0001	May 29-09	No
Metolachlor	mg/L	0.05	<0.0001	May 29-09	No
Metribuzin	mg/L	0.09	<0.0001	May 29-09	No
Monochlorobenzene	mg/L	0.09	<0.0005	May 29-09	No
Paraquat	mg/L	0.01	<0.001	May 29-09	No
Parathion	mg/L	0.05	<0.0001	May 29-09	No
Pentachlorophenol	mg/L	0.06	<0.0005	May 29-09	No
Phorate	mg/L	0.002	<0.0001	May 29-09	No
Picloram	mg/L	0.19	<0.0002	May 29-09	No
Total PCB	mg/L	0.003	<0.00002	May 29-09	No
Prometryne	mg/L	0.001	<0.0001	May 29-09	No
Simazine	mg/L	0.01	<0.0001	May 29-09	No
Temephos	mg/L	0.28	<0.0001	May 29-09	No
Terbufos	mg/L	0.001	<0.0002	May 29-09	No
Tetrachloroethylene	mg/L	0.03	<0.0005	May 29-09	No
2,3,4,6-Tetrachlorophenol	mg/L	0.1	<0.0005	May 29-09	No
Triallate	mg/L	0.23	<0.0001	May 29-09	No
Trichlorethylene	mg/L	0.005	<0.0005	May 29-09	No
2,4,6-Trichlorophenol	mg/L	0.005	<0.0005	May 29-09	No
Trifluralin	mg/L	0.045	<0.0002	May 29-09	No
2,4,5-T	mg/L	0.28	<0.0001	May 29-09	No
Vinyl chloride	mg/L	0.002	<0.0005	May 29-09	No
Large Municipal Residential – required once every 36 months. Standards of O.Reg 169/03 – Schedule 2					

List any Inorganic or Organic parameter(s) that exceeded half the standard prescribed in Schedule 2 of Ontario Drinking Water Quality Standards.

Parameter	Units	MAC	Results	Date Sampled

**Sault Ste. Marie
Drinking Water System
260006685**

**Summary Reports for Municipalities
2009**

**As required by
Schedule 22 of O. Reg 170/03**

Requirements of the Summary Report

The owner of a drinking water system shall ensure that, not later than March 31 of each year, a report is prepared in accordance with Schedule 22 of O.Reg 170/03 for the preceding calendar year. This report covers the time from Jan 1, 2009 to Dec 31, 2009.

The report must:

- a. list the requirements of the Act, the regulations, the system's approval, drinking water works permit, municipal drinking water licence, and any orders applicable to the system that were not met at any time during the period covered by the report
- b. for each requirement referred to in clause (a) that was not met, specify the duration of the failure and the measures that were taken to correct the failure.

The report must also include the following information for the purpose of enabling the owner of the system to assess the capability of the system to meet existing and planned uses of the system:

1. A summary of the quantities and flow rates of the water supplied during the period covered by the report, including monthly average and maximum daily flows.
2. A comparison of the summary referred to in paragraph 1 to the rated capacity and flow rates approved in the system's approval, drinking water works permit or municipal drinking water licence, or if the system is receiving all of its water from another system under an agreement; to the flow rates specified in the written agreement.

Regulations

Safe Drinking Water Act, 2002 ONTARIO REGULATION 170/03 DRINKING WATER SYSTEMS

System Approval

Ministry of the Environment, Ammended Certificate of Approval, Municipal Drinking Water Systems, Number 8018-7FJPRJ, issued Nov 4, 2008

DWS Number: 260006685

Inspected By: Clifford Graham

Inspection Number: 1-7L19E

Date of Inspection: September 16, 2009

Non – compliance with regulatory requirements and actions required:

- 1. Meter department staff who respond to drinking water complaints did not have the required qualifications as prescribed in O.Reg. 248/03 for drinking water testing.**

Action Required

The owner shall ensure that any staff performing a prescribed test for the drinking water system has the required qualifications. The owner shall also ensure that a procedure is in place to address the handling of test results, including the requirement to notify a qualified operator if warranted by any test result.

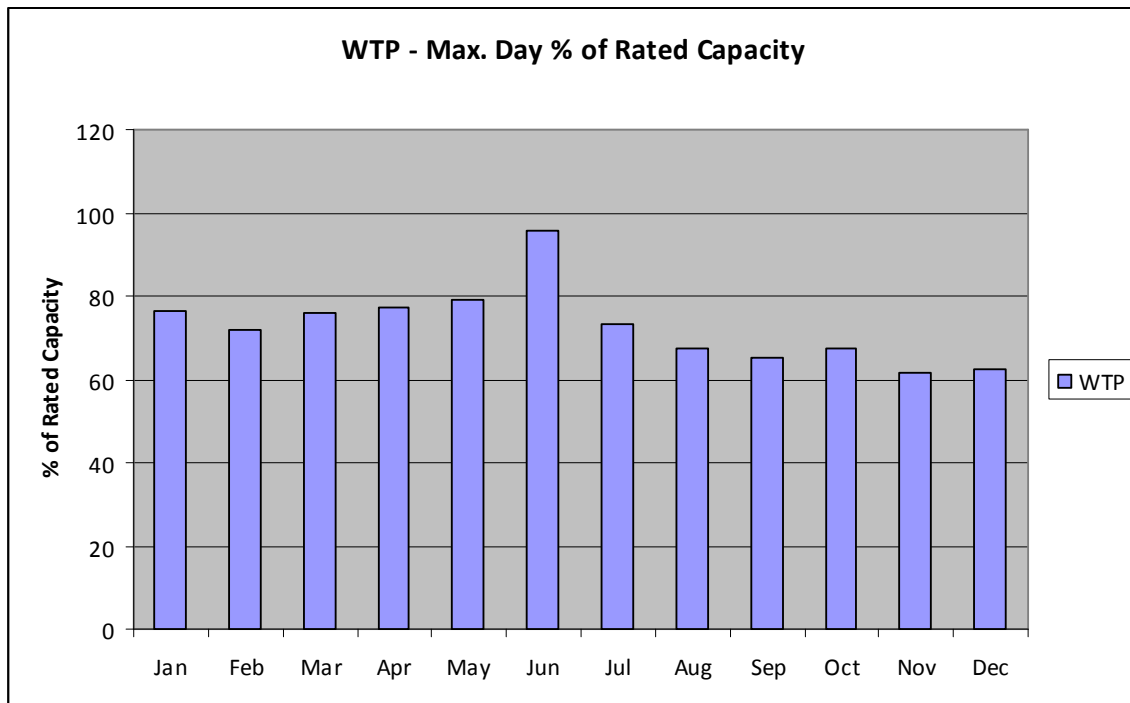
Corrective Actions

Metering Dept. Staff who respond to water quality complaints have taken a 3 day training course (Water Quality Analyst) on Feb 1-3, 2010 instructed by Wayne Manley of the Ontario Good Roads Association.

Capacity Assessments

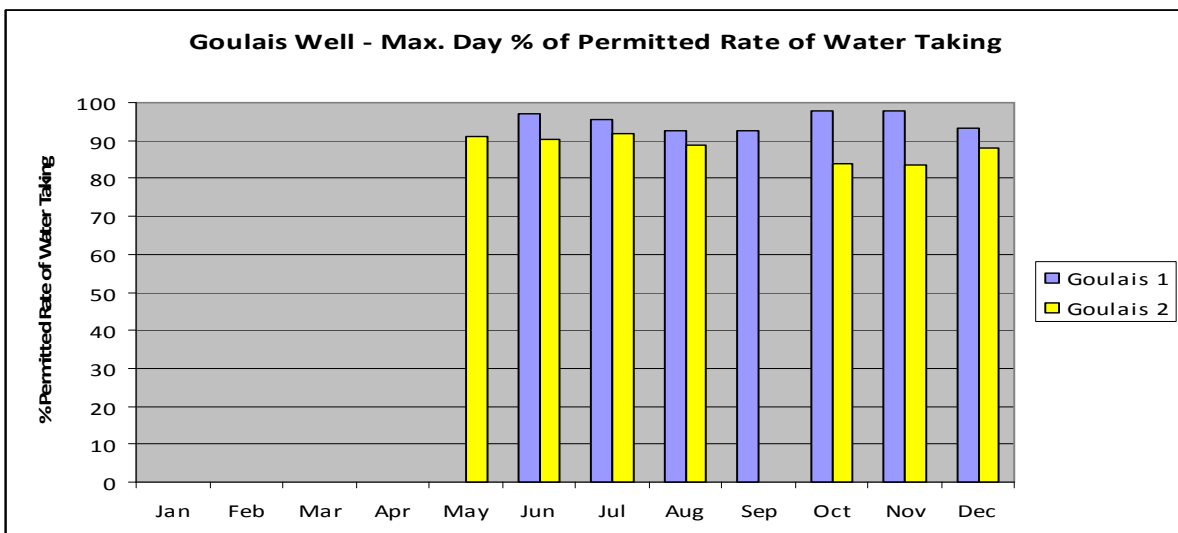
Water Treatment Plant (Treated Water)					
O.Reg 170/03 Schedule 22-2					
Rated capacity of 40000 (m ³) per day					
Month	Total Volume (m ³)	Min Daily Volume (m ³)	Max Daily Volume (m ³)	Avg Daily Volume (m ³)	% of Rated Capacity using Max Daily Volume
January	802,693	21,213	30,595	25,893	76.5
February	641,719	10,103	28,839	22,919	72.1
March	847,482	21,936	30,330	27,338	75.8
April	818,726	23,068	30,881	27,291	77.2
May	806,648	18,672	31,701	26,020	79.3
June	886,592	14,715	38,327	29,553	95.8
July	688,110	8671	29,343	22,197	73.4
August	638,334	14,336	26,977	20,591	67.4
September	595,480	14,666	26,097	19,849	65.2
October	596,763	13,711	26,962	19,250	67.4
November	518,842	11,533	24,591	17,295	61.5
December	613,977	14,729	25,033	19,806	62.6

The Certificate of Approval specifies a maximum rated flow of 40,000 m³/day. The max flow rate reported was 38,327 m³, (95.8 %) of the rated capacity.

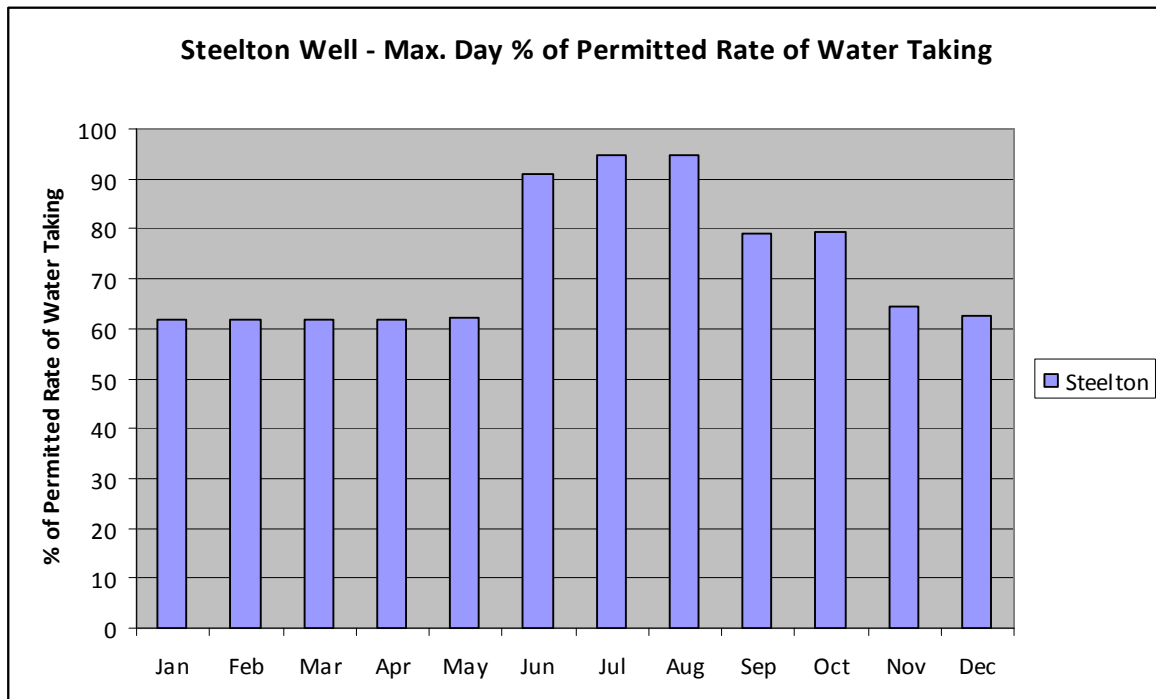


Goulais Pump Station (Pump #1)						
Permitted Rate of Water Taking for Pump #1 - 6606 (m ³) per day						
Month	Total Volume (m ³)	Min Daily Volume (m ³)	Max Daily Volume (m ³)	Avg Daily Volume (m ³)	% of Station Capacity using Max Daily Volume	% of Permitted Water Taking using Max Daily Volume
January	P/S down	P/S down	P/S down	P/S down	P/S down	P/S down
February	P/S down	P/S down	P/S down	P/S down	P/S down	P/S down
March	P/S down	P/S down	P/S down	P/S down	P/S down	P/S down
April	P/S down	P/S down	P/S down	P/S down	P/S down	P/S down
May	P/S down	P/S down	P/S down	P/S down	P/S down	P/S down
June	150,575	0	6398	5098	63.9	96.9
July	151,812	0	6312	4480	63.0	95.5
August	150,492	0	6109	5814	61.0	92.5
September	179,907	5757	6107	5997	61.0	92.4
October	110,769	5745	6462	6008	64.5	97.8
November	159,196	0	6466	5675	64.6	97.9
December	42,159	5790	6161	6034	61.5	93.3

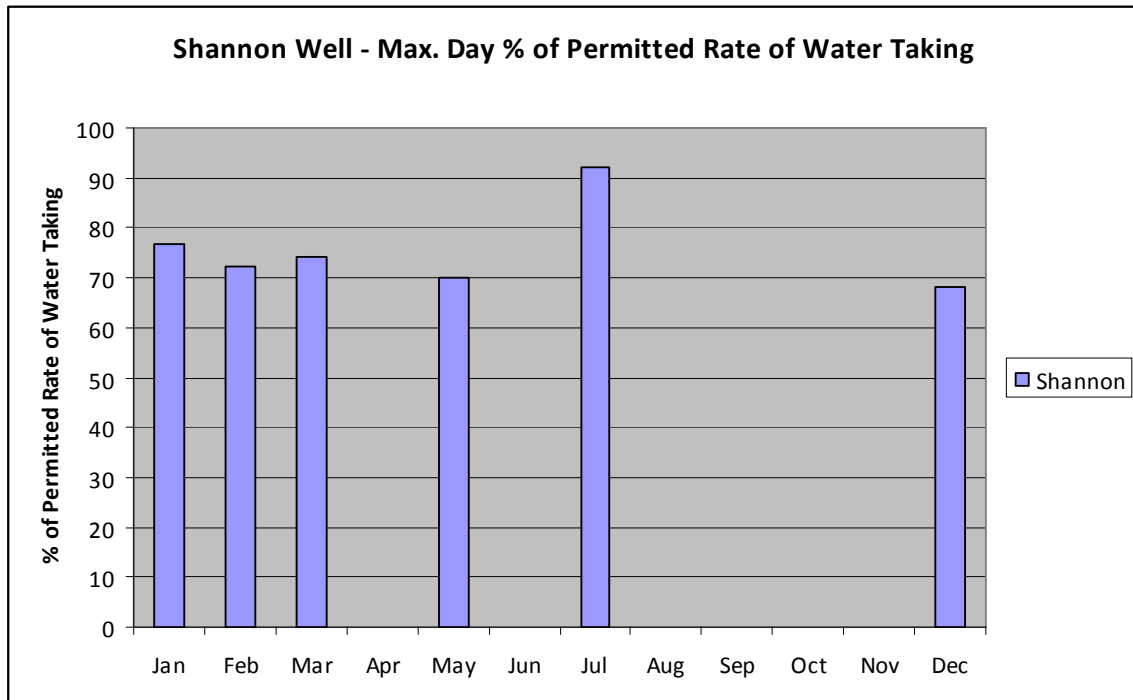
Goulais Pump Station (Pump #2)						
Permitted Rate of Water Taking for Pump #2 - 3407 (m ³) per day						
Month	Total Volume (m ³)	Min Daily Volume (m ³)	Max Daily Volume (m ³)	Avg Daily Volume (m ³)	% of Station Capacity using Max Daily Volume	% of Permitted Water Taking using Max Daily Volume
January	P/S down	P/S down	P/S down	P/S down	P/S down	P/S down
February	P/S down	P/S down	P/S down	P/S down	P/S down	P/S down
March	P/S down	P/S down	P/S down	P/S down	P/S down	P/S down
April	P/S down	P/S down	P/S down	P/S down	P/S down	P/S down
May	12,694	0	3105	409	31.0	91.1
June	2351	0	3071	3050	30.7	90.1
July	22,024	0	3124	3033	31.2	91.7
August	18,064	0	3023	2897	30.2	88.7
September	P/S down	P/S down	P/S down	P/S down	P/S down	P/S down
October	34,419	0	2858	2759	28.5	83.9
November	5702	2775	2850	2810	28.5	83.7
December	67,296	0	2996	2766	29.9	87.9



Steelton Pump Station O.Reg 170/03 Schedule 22-2					
Permitted Rate of Water Taking for pump8208 (m ³) per day					
Month	Total Volume (m ³)	Min Daily Volume (m ³)	Max Daily Volume (m ³)	Avg Daily Volume (m ³)	% of Permitted Water Taking using Max Daily Volume
January	155,954	4857	5079	5031	61.9
February	141,174	4852	5076	5042	61.8
March	154,765	3779	5065	4992	61.7
April	150,643	4755	5062	5021	61.7
May	156,311	4880	5097	5042	62.1
June	121,585	0	7463	4053	90.9
July	234,150	6527	7783	7553	94.8
August	211,975	5145	7761	6838	94.6
September	182,257	5207	6501	6075	79.2
October	176,501	4991	6525	5694	79.5
November	151,251	4225	5306	5042	64.6
December	158,285	5047	5146	5106	62.7



Shannon Pump Station O.Reg 170/03 Schedule 22-2					
Rated Capacity of 7000 (m ³) per day					
Month	Total Volume (m ³)	Min Daily Volume (m ³)	Max Daily Volume (m ³)	Avg Daily Volume (m ³)	% of Permitted Water Taking using Max Daily Volume
January	154,600	3307	5370	4987	76.7
February	138,195	4814	5067	4936	72.4
March	95,133	0	5203	3069	74.3
April	P/S down	P/S down	P/S down	P/S down	P/S down
May	82,500	0	4897	2661	70.0
June	P/S down	P/S down	P/S down	P/S down	P/S down
July	10,917	0	6445	352	92.1
August	P/S down	P/S down	P/S down	P/S down	P/S down
September	P/S down	P/S down	P/S down	P/S down	P/S down
October	P/S down	P/S down	P/S down	P/S down	P/S down
November	P/S down	P/S down	P/S down	P/S down	P/S down
December	63,681	0	4784	2054	68.3

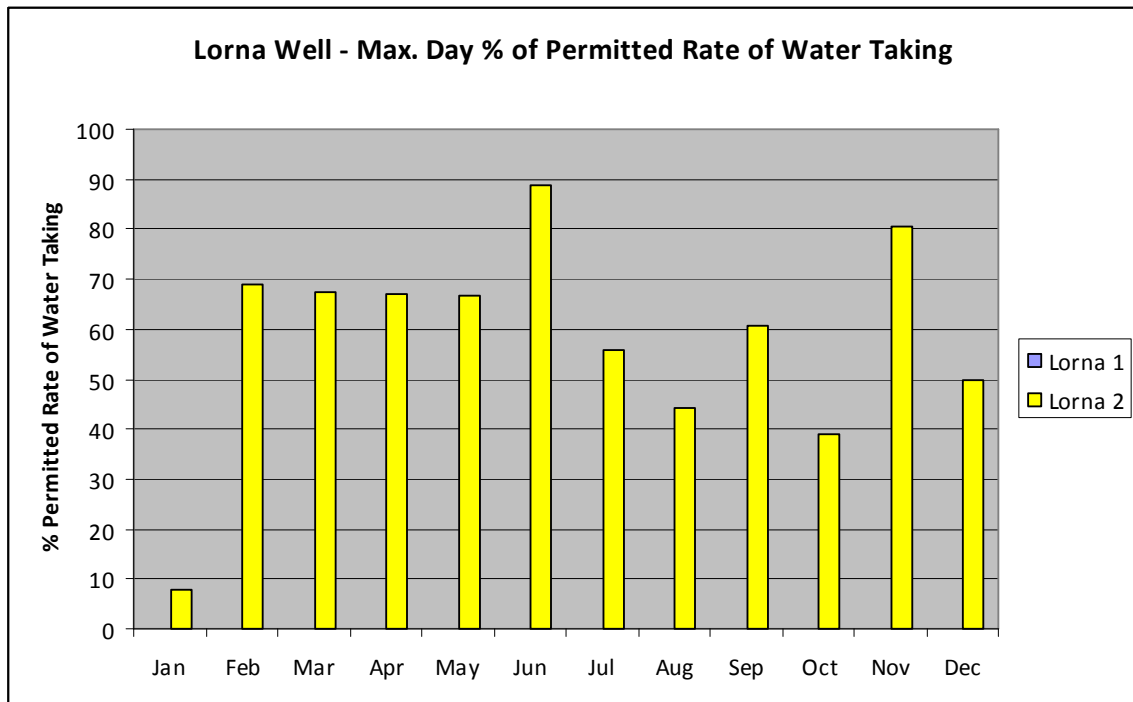


Lorna Pump Station (Pump #1)						
Rate of Water Taking for Pump #1 7279.2 (m ³) per day						
Month	Total Volume (m³)	Min Daily Volume (m³)	Max Daily Volume (m³)	Avg Daily Volume (m³)	% of Station Capacity using Max Daily Volume	% of Permitted Water Taking using Max Daily Volume
January	P/S down	P/S down	P/S down	P/S down	P/S down	P/S down
February	P/S down	P/S down	P/S down	P/S down	P/S down	P/S down
March	P/S down	P/S down	P/S down	P/S down	P/S down	P/S down
April	P/S down	P/S down	P/S down	P/S down	P/S down	P/S down
May	P/S down	P/S down	P/S down	P/S down	P/S down	P/S down
June	P/S down	P/S down	P/S down	P/S down	P/S down	P/S down
July	P/S down	P/S down	P/S down	P/S down	P/S down	P/S down
August	P/S down	P/S down	P/S down	P/S down	P/S down	P/S down
September	P/S down	P/S down	P/S down	P/S down	P/S down	P/S down
October	P/S down	P/S down	P/S down	P/S down	P/S down	P/S down
November	P/S down	P/S down	P/S down	P/S down	P/S down	P/S down
December	P/S down	P/S down	P/S down	P/S down	P/S down	P/S down

The Certificate of Approval specifies a maximum rated flow of 7,279.2 m³/day. The well had 0 flow for the year 2009.

Lorna Pump Station (Pump #2)						
Rate of Water Taking for Pump #1 7279.2 (m ³) per day						
Month	Total Volume (m³)	Min Daily Volume (m³)	Max Daily Volume (m³)	Avg Daily Volume (m³)	% of Station Capacity using Max Daily Volume	% of Permitted Water Taking using Max Daily Volume
January	570	0	570	18	3.9	7.8
February	105,323	0	5010	3762	34.4	68.8
March	61,294	0	4906	1977	33.7	67.4
April	146,103	4862	4874	4870	33.5	67.0
May	91,030	0	4865	2936	33.4	66.8
June	46,019	0	6459	1534	44.4	88.7
July	4066	0	4066	131	27.9	55.9
August	37,306	0	3225	1203	22.2	44.3
September	96,342	171	4427	3211	30.4	60.8
October	87,694	0	3502	2829	24.1	38.9
November	91,919	361	5865	3064	40.3	80.6
December	12,837	0	3636	414	30.1	50.0

The Certificate of Approval specifies a maximum rated flow of 7,297.2 m³/day. The max flow rate reported was 6,459 m³, (88.7 %) of the rated capacity.



This Summary report for Sault Ste. Marie Drinking Water System for the period of January 1st to December 31st 2009 has been prepared in accordance to Schedule 22 of O. Reg 170/03. The report has been reviewed and endorsed by the Public Utilities Commission of the City of Sault Ste. Marie.